

380 Square Foot Cabin



Ukkei

Ukkei means home.

cabin 380



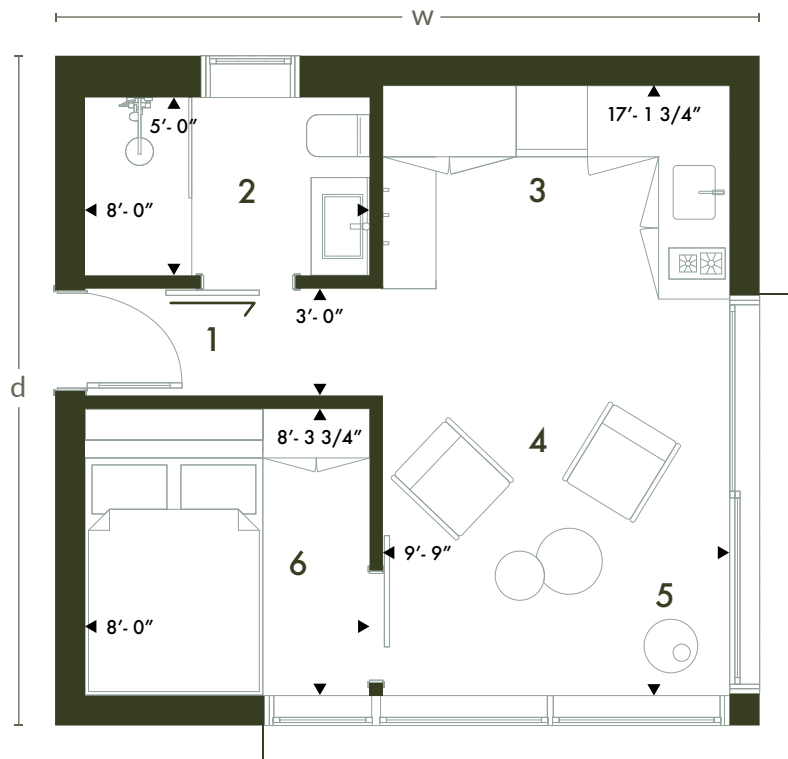
ukkei means home

ukkei.ca

Ukkei is VFA Architecture + Design and Hummingbird Hill Homes. Combined, we have over 40 years of experience designing and building homes across the GTA and Ontario. Ukkei isn't just the home reimagined—it's also experience and expertise.

Our Ukkei cabin is a sustainable, compact, high-quality cabin designed for living. Like all Ukkei, we assemble most of your cabin off-site in a facility we own and operate, reducing disruption, uncertainty, and waste on site. The result: a better built home that is more efficient, more durable, and more accessible. It's a win-win-win.

This mid-size Ukkei doesn't skimp on function. Equipped with a kitchen, 3-piece bathroom, bedroom, and premium Stûv wood burning fireplace, our 380 square foot Ukkei makes an ideal standalone cabin.



Ground Floor

1. Entry
2. Bathroom
3. Kitchen
4. Living area
5. Fireplace
6. Bedroom (queen bed)

Overall exterior dimensions are 19'-9 5/8" (w) by 18'-9 7/8" (d)

Finish options.

cabin 380



Interior of 580 square foot cabin shown.
For illustrative purposes only.

Light Palette

Our Light Palette features durable finishes that give Ukkei an airy, open feeling that reduces the sensation of separation between you and the environment.

- A Wide-plank, engineered hardwood flooring
- B Birch plywood finish on walls and ceilings
- C Dekko concrete panels
- D Cool grey quartz countertops with concrete texture
- E Gray painted kitchen cabinets
- F Black interior window frames
- G Chrome door hardware and plumbing fixtures

Finishes subject to change or substitution.

ukkei means home

ukkei.ca

Finish options.

cabin 380

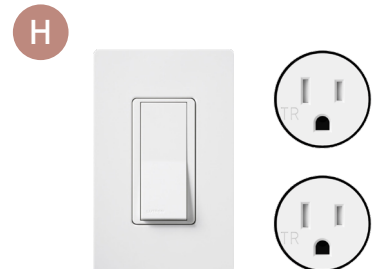


Interior of 580 square foot cabin shown.
For illustrative purposes only.

Light Palette Plus

The upgraded Light Palette adds premium fixtures, refined details, and generous wood finishes to enhance your experience of living in a Ukkei cabin.

- A Wide-plank, engineered hardwood flooring
- B Interior hemlock cladding with clear finish on walls and ceilings
- C Grey herringbone porcelain tile
- D Laminam Calce Tortora countertops
- E Wood veneer kitchen cabinets with clear finish
- F Black interior window frames
- G Matte black door hardware and plumbing fixtures
- H Flush mount switches and premium circular Bocci® wall outlets



Finishes subject to change or substitution.

ukkei means home

ukkei.ca

Finish options.

cabin 380



Interior of 580 square foot cabin shown.
For illustrative purposes only.

Dark Palette

Our Dark Palette features durable finishes that give Ukkei an intimate, warm feeling—like a private sanctuary in the woods.

- A Wide-plank, engineered hardwood flooring
- B Birch plywood finish on walls and ceilings
- C Dekko concrete panels
- D Earthy grey quartz countertops with fine stippled texture
- E Black satin painted kitchen cabinets
- F Black interior window frames
- G Chrome door hardware and plumbing fixtures

Finishes subject to change or substitution.

ukkei means home

ukkei.ca

Finish options.

cabin 380

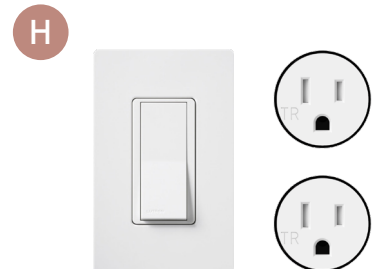


Interior of 580 square foot cabin shown.
For illustrative purposes only.

Dark Palette Plus

The upgraded Dark Palette adds premium fixtures, refined details, and generous wood finishes to enhance your experience of living in a Ukkei cabin.

- A Wide-plank, engineered hardwood flooring
- B Interior cedar cladding with stained finish on walls and ceilings
- C Grey herringbone porcelain tile
- D Laminam Calce Nero countertops
- E Wood veneer kitchen cabinets with stained finish
- F Black interior window frames
- G Matte black door hardware and plumbing fixtures
- H Flush mount switches and premium circular Bocci® wall outlets



Finishes subject to change or substitution.

ukkei means home

ukkei.ca



Ukkei

Contact us

info@ukkei.ca

Pricing starting at 198,000†

†Pricing excludes site servicing, foundation, shipping, and installation which varies by individual site conditions. 'Plus' finish options additional. Contact us for more information.

Ukkei homes is a collaboration between VFA Architecture + Design and Hummingbird Hill Homes.

ukkei.ca

vf-a.com

hummingbirdhillhomes.com

